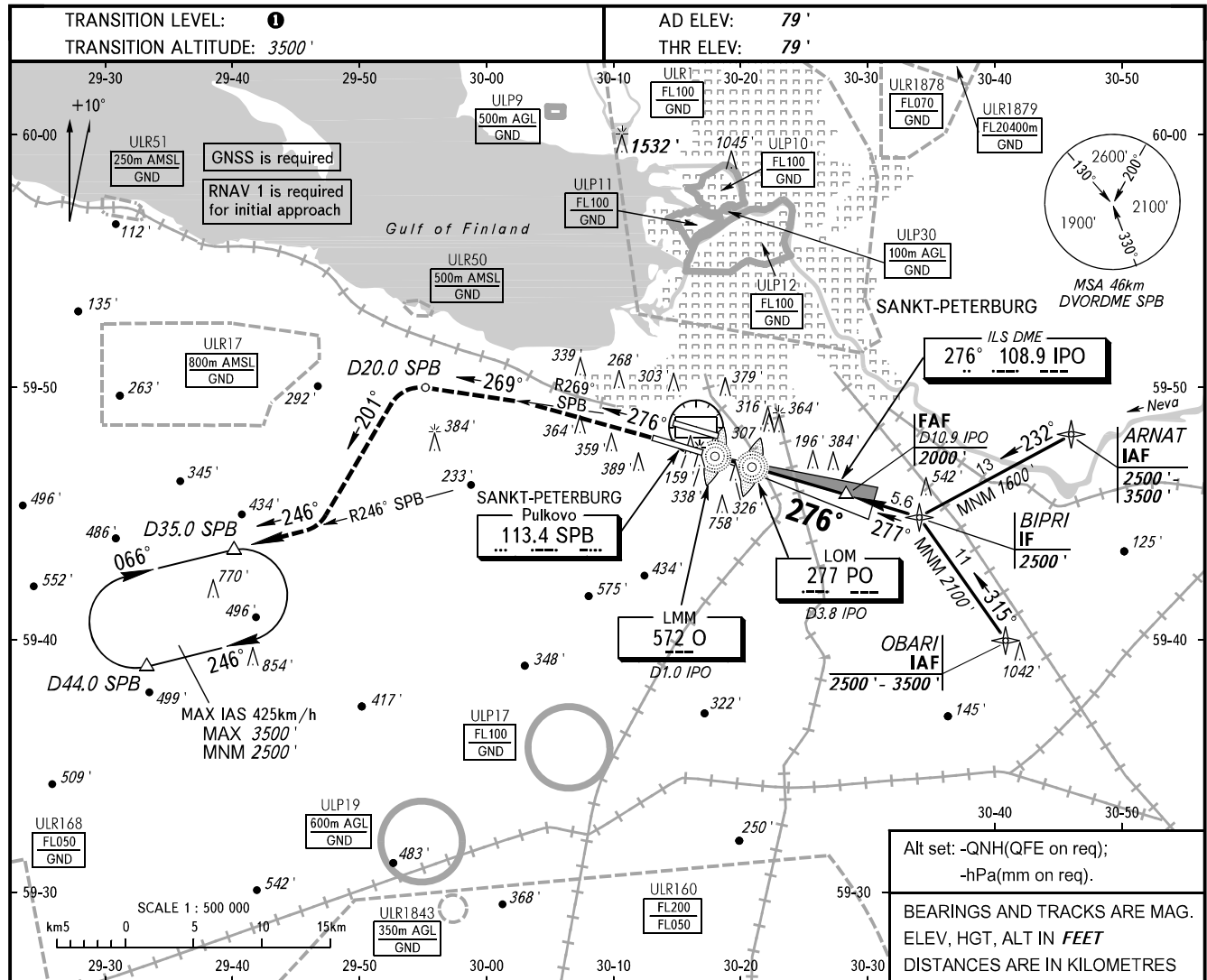


INSTRUMENT
APPROACH
CHART - ICAO

KRUG TOWER 120.300
TOWER 118.700

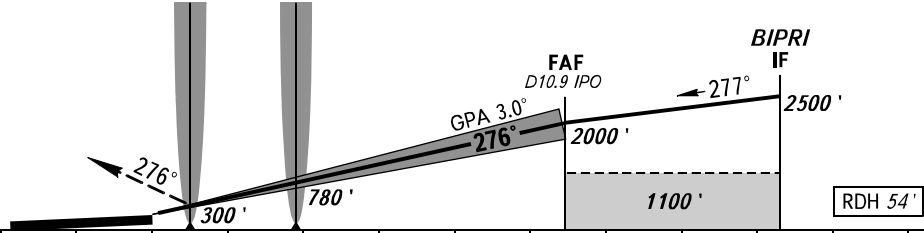
SANKT-PETERBURG, RUSSIA
PULKOVO
ILS Y RWY 28L CAT I



MISSED APPROACH

Climb straight ahead on track 276°, intercept R269° SPB, proceed to D20.0 SPB, turn LEFT onto track 201°, intercept R246° SPB, proceed to D35.0 SPB climbing to 2500', then join the holding area.

O D1.0 IPO PO D3.8 IPO



OCA(H)		A	B	C	D								
Straight-in Approach	CAT I	259' (180')	270' (191')	278' (199')	289' (210')								
	Circling	690' (610')	1060' (980')	1160' (1080')	1160' (1080')								
GROUND SPEED	km/h	150	180	210	240	270	300	330	360	390	420	450	
RATE OF DESCENT	m/s		2.2	2.6	3.0	3.5	3.9	4.3	4.8	5.2	5.6	6.1	6.5

1 TRANSITION LEVEL:
 - FL050 when QNH is 747mm mercury column or above;
 - FL060 when QNH is less than 747mm mercury column and is 720mm mercury column or above;
 - FL070 when QNH is less than 720mm mercury column.

NOTE:
 1. Zero range of IPO DME is indicated at RWY 28L THR.
 2. Level flight segment is not AVBL before FAF.